

Area

- amount of space an object takes up in 2-D space.

Area of Rectangle

$$A = l \times w$$



$$2 \times 6 = 12 \text{ cm}^2$$

Area of Square

$$A = l \times w$$

$$A = S \times S$$

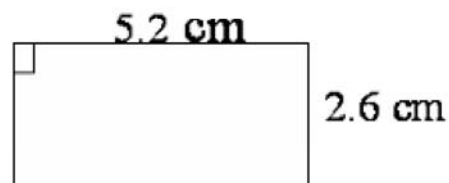
$$2S \text{ or } S^2$$



$$2 \times 2 = 4 \text{ cm}^2$$

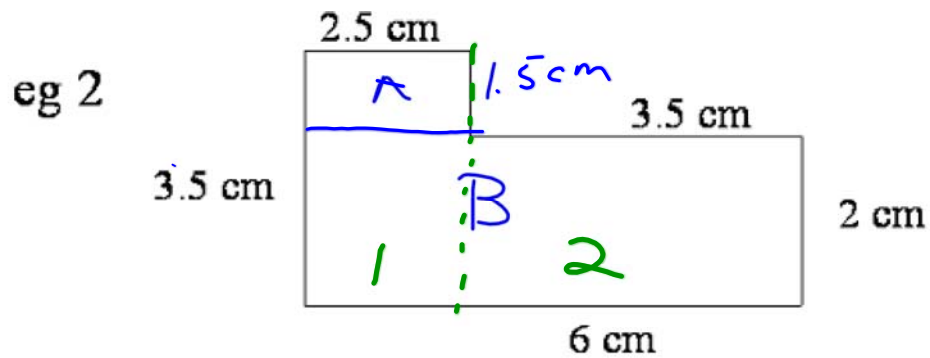
eg 1 Find area

$$5.2 \times 2.6$$



$$\begin{aligned} A &= (5.2 \text{ cm})(2.6 \text{ cm}) \\ &= 13.52 \text{ cm}^2 \end{aligned}$$

Area I - 2 -



(diagram not to scale)

Find Area

$$A - 1.5 \times 2.5 = 3.75 \text{ cm}^2$$

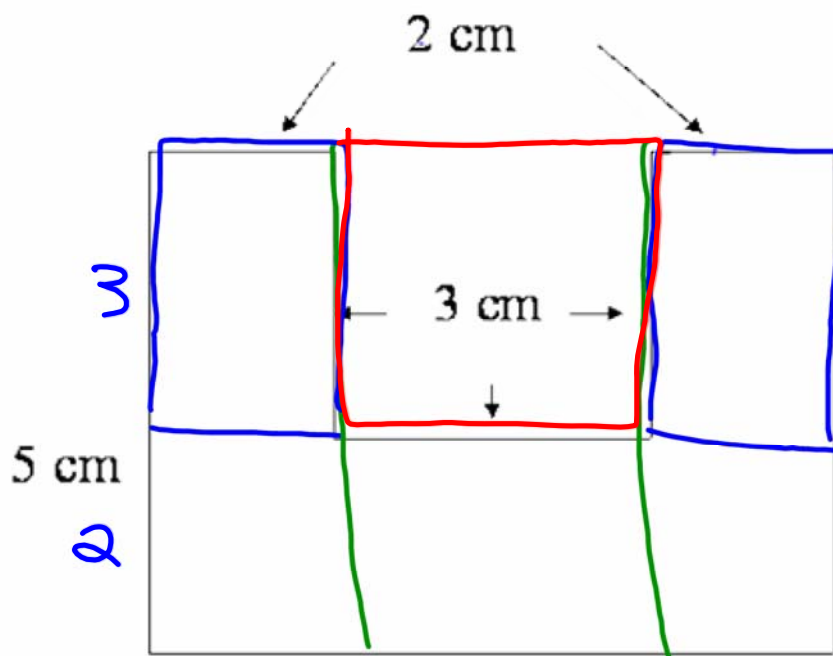
$$B - 6 \times 2 = 12.00$$

$$\underline{\quad\quad\quad}$$
$$15.75 \text{ cm}^2$$

Ans = 15.75 cm²

Area I - 3 -

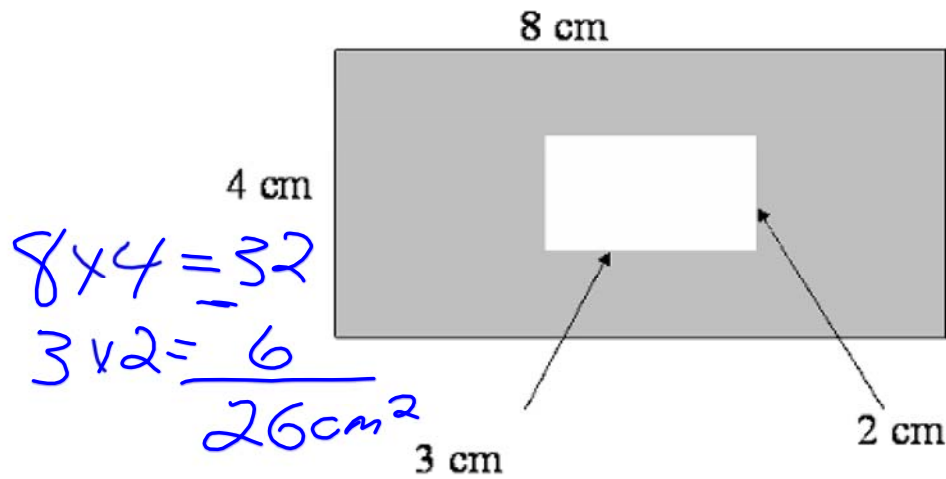
eg 3



$$\begin{array}{r} 35 \\ - 9 \\ \hline 26 \text{ cm}^2 \end{array}$$

$$\begin{array}{r} \times 3 = 6 \\ 2 \times 3 = 6 \\ 2 \times 7 = 14 \\ \hline 26 \text{ cm}^2 \end{array}$$

Ans = 34 cm²

eg 4 Find area *shaded*

$$\begin{aligned}\text{Area large} &= (8 \text{ cm})(4 \text{ cm}) \\ &= 32 \text{ cm}^2\end{aligned}$$

$$\begin{aligned}\text{Area small} &= (3 \text{ cm})(2 \text{ cm}) \\ &= 6 \text{ cm}^2\end{aligned}$$

Area shaded

$$= 32 \text{ cm}^2 - 6 \text{ cm}^2$$

$$= 26 \text{ cm}^2$$